

How To: Add a folder that contains custom files to the AutoCAD Support File Search Path

1. In the Options dialog box, Files tab, expand the Support File Search Path node (see Figure 1).

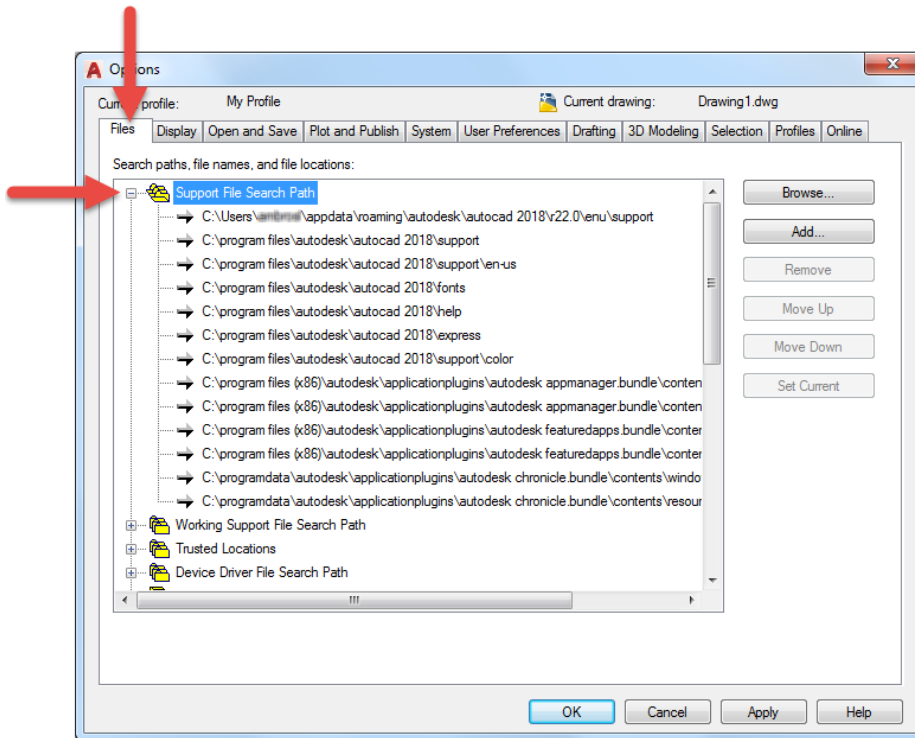


Figure 1. The Support File Search Path node displays the locations in which the AutoCAD programs should locate custom files

2. With the Support File Search Path node selected, click Add (see Figure 2). A new entry is added to the node allowing you to specify the folder location to add.

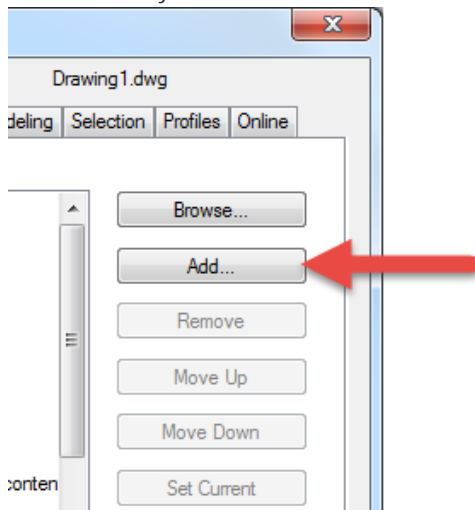


Figure 2. Adding a new folder location

3. Click the Browse button located above the Add button you just clicked in the previous step.
4. In the Browse for Folder dialog box, navigate to and select the folder location that contains your custom files (see Figure 3). Click OK.

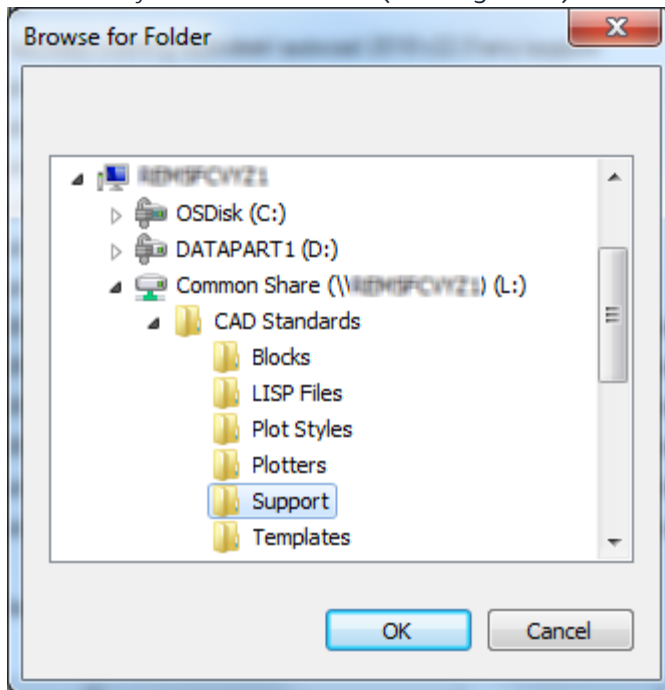


Figure 3. Navigating to a folder that contains custom files

5. In the Options dialog box, Files tab, with the new folder location selected, click the Move Up button until the new folder location is at the top of the list (see Figure 4).

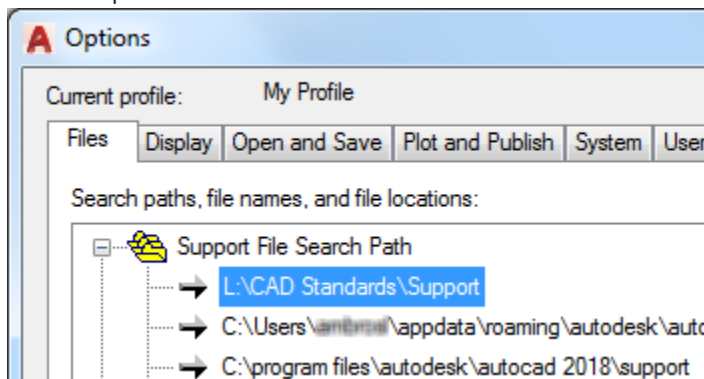


Figure 4. Reordered file locations

The order in which folders is listed is important, AutoCAD will locate and use the first instance of a file it locates. So, if there are two files named *acad.pat* in the folders listed under the Support File Search Path node, the AutoCAD program will use the very first one it locates. By placing the folders that contain your custom files at the top, it will ensure the AutoCAD program searches your folders first for any custom files.

6. Repeat Steps 2-5 for each folder that contains custom files such as LSP, LIN, PAT, CUIx among others that you want the AutoCAD program to be able to locate and use.
7. Click the Apply button to save the changes to the user profile and keep the Options dialog box open, or click OK to save the changes to the user profile and close the Options dialog box.

Note: The folder locations in which the AutoCAD program looks for plot styles, plotter configuration, and drawing templates files can be found under the Printer Support File Path and Template Settings nodes.